

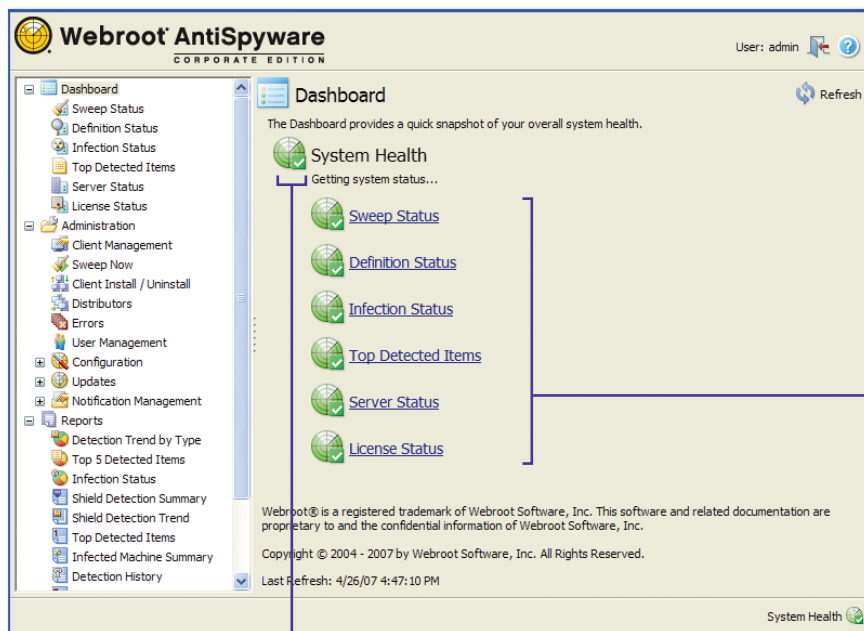


Webroot® Products Provide the Most Effective Network Security Protection.

Spyware, viruses and other malicious malware threats become more aggressive and damaging every day. These threats can cause significant financial damage due to network downtime, decreased productivity costs, legal and compliance fees, and data loss. Securing your business network with a centrally managed desktop security solution is critical to maintaining optimal desktop performance, securing digital assets and ensuring business continuity.

Webroot's award-winning business solutions mitigate these security risks by providing the most effective protection against known and unknown threats including spyware, viruses, Trojans, keyloggers, rootkits, adware and other harmful intruders.

Management Console Dashboard



CLICK REFRESH to update all dashboard information based on the latest poll from each client (otherwise, information refreshes hourly.)

CLICK A LINK to view more details

SHOWS OVERALL STATUS. If any single category has a warning or critical status, this icon reflects the most serious status.

Product Overview

Webroot AntiSpyware Corporate Edition with AntiVirus

Webroot AntiSpyware Corporate Edition with AntiVirus offers combined protection at a better value than suites or two standalone products. It provides complete protection in a single, easy-to-use solution. An integrated solution means fewer installations, updates and upgrades, one support team and better overall system performance. Antispyware protection is powered by award-winning Webroot Spy Sweeper® technology. Antivirus protection is powered by Sophos.

Webroot AntiSpyware Corporate Edition

Already have an antivirus solution? Do not underestimate the need for standalone antispyware protection – freeware and featureware will not protect you! Spyware is a dynamic and hidden threat that requires a dedicated, robust solution to defeat it. Antivirus security solutions do not offer adequate protection required to defeat the evolving threat posed by complex spyware exploits.

What's New

- Active Directory integration for simplified network installation and deployment
- Sophos Behavioral Genotype® Protection provides behavioral protection against unknown malware threats
- More powerful, proactive real-time threat protection capabilities
- Better spyware detection, trace and real-time threat reports
- Windows Vista™ compatible

Key Benefits

- 40% more effective than competitors at blocking, detecting, and removing spyware threats
- Robust reports provide better visibility into threats so you can be confident your network is secure
- Simplified installation and deployment increase efficiency
- One administration console to manage antivirus and antispysware protection

Product Comparison

FEATURE	Webroot AntiSpyware with AntiVirus	Webroot AntiSpyware
Single Management Console	X	X
Single Client Desktop Agent	X	X
Real-time Threat Protection	X	X
Active Directory Integration	X	X
Detection, Trace and Real-time Threat Reports	X	X
Windows Vista Compatible	X	X
Flexible, Centralized Management and Reporting	X	X
Antispyware Protection Powered by Award-winning Webroot Spy Sweeper Technology	X	X
Industry Leading Antivirus Protection Powered by Sophos	X	
Integrated, Robust Antispyware and Antivirus Protection	X	
Behavioral Genotype Protection	X	

SYSTEM REQUIREMENTS

CORPORATE SERVER:

Windows® 2000 Pro/Server with SP4, XP Pro SP2, Server 2003 (Standard, Enterprise, or SMG with SP1), Vista

CPU: 1 GHz minimum

Memory: 1 GB minimum

Disk Space: 1 GB minimum

DB Support: Microsoft SQL Server 2005 Express, SQL Server 2000 and 2005

Browser:

- Internet Explorer® 6.0 SP1 or later
- Firefox® 2.0.0.1

DISTRIBUTOR SERVER:

Windows 2000 Pro/Server with SP4, XP Pro SP2, Server 2003 (Standard, Enterprise, or SMG with SP1), Vista

CPU: 1 GHz minimum

Memory: 1 GB minimum

Disk Space: 1 GB minimum

CLIENT REQUIREMENTS:

Windows 2000 Pro/Server with SP4, XP Pro, XP Home, XP Tablet, Server 2003 (Standard, Enterprise, or SMG with SP1), Vista

CPU: 1 GHz minimum

Memory: 256 MB or better recommended

Disk Space: 15 MB free space

Browser:

- Internet Explorer 6.0 SP1 or later
- Firefox 2.0.0.1