



# VIPRE<sup>®</sup>

## ENTERPRISE

## VIPRE Enterprise:

High-performance Next-generation Total Malware Protection

**Kiss your antivirus bloatware goodbye... Finally! Powerful endpoint malware protection that isn't a resource hog! VIPRE Enterprise is a revolutionary new approach, built from scratch as the all-in-one antivirus, antispyware, anti-rootkit solution. Fast, powerful, easy-to-manage – with low impact on system resources!**

VIPRE Enterprise combines antivirus, antispyware, anti-rootkit and other technologies into a seamless, tightly-integrated product. Starting with a blank slate, Sunbelt architected VIPRE to incorporate the best ideas for dealing with malware in the most comprehensive, highly efficient manner. The result is a clean, fast, and powerful anti-malware solution designed “by admins for admins”.

### Proprietary antivirus and antispyware detection engine uses all-new technology

At VIPRE's core is an antivirus and antispyware engine that merges the detection of all types of malware into a single, efficient, and powerful system. The new technology was developed exclusively by Sunbelt, without building on older generation antivirus engines. VIPRE Enterprise utilizes a high speed threat scanning engine that can scan large volumes of information for malware threats in a short period of time with limited performance impact on the end user's PC.

### Centralized management

VIPRE Enterprise has been built from the ground up for real-world enterprise malware remediation. VIPRE Enterprise's central management console allows you to access and control agent configuration and deployment, threat database updates, quarantined spyware, agent policies, scan scheduling, and recommended actions to detected malware threats. The management console provides four customizable dashboards for at-a-glance views of scanning and remediation activities that show

overall system health and performance.



### Malware Command Center

These configurable dashboards enable you to easily create a customized “malware command center” that gives instant access to your most used reports and policy controls. Deployment throughout your organization is seamless, featuring an intuitive policy-based user interface with multiple methods to deploy transparently.

### Real-time monitoring with Active Protection™

VIPRE's Active Protection delivers real-time monitoring and protection against known and unknown malware threats. Active Protection works inside the Windows kernel, watching for malware and stopping it before it has a chance to execute on a user's system.

Active Protection incorporates a number of detection methods to protect the user including classic signature detection and heuristics. Additionally, a new malware analysis technology, MX-Virtualization™ (“MX-V”), provides a compact, high-speed virtualized Windows environment integrated directly into VIPRE which performs rapid behavioral analysis of potential malware. The integration of MX-V helps protect users from unidentified or new variants of malware. The combination of all these techniques provides an extraordinarily powerful level of real-time protection to the user.

### Advanced anti-rootkit technology

VIPRE's anti-rootkit technology finds and disables malicious hidden processes, threats, modules, services, files, Alternate Data Streams (ADS), or registry keys on a user's system. Removing rootkits is supplemented by VIPRE's FirstScan™, which runs at the system's boot time. FirstScan bypasses the Windows operating system, to directly scan certain locations of the hard drive for malware, removing infections where found.

### High performance with low impact to system resources

User surveys show the biggest frustration with existing anti-malware solutions is bloat and high resource usage. VIPRE addresses these concerns.

Sunbelt Software





Designed with the latest programming and architectural methodologies, it runs seamlessly without significantly impairing system performance. VIPRE is also designed for an unobtrusive user experience, keeping notification pop-ups and warnings to a minimum.

### Full protection against email-borne threats

VIPRE includes comprehensive protection against email viruses, with direct support for Outlook, Outlook Express and Windows Mail; and support for any email program that uses POP3 and SMTP (Thunderbird, IncrediMail, Eudora, etc.).

### Robust threat definition database

VIPRE Enterprise benefits from multiple sources for its threat definition updates, making it the premier anti-malware solution to protect your end users and networks from malware. Updated daily, the threat definition database includes a rapidly growing library of hundreds of thousands of threat signatures. These multiple sources for new definitions include:

- Research from Sunbelt Malware Research Labs
- ThreatNet™, Sunbelt's user community of hundreds of thousands of VIPRE consumer users that anonymously send information on possible threats to Sunbelt.
- Sunbelt CWSandbox, the leading automated malware behavior analysis tool for fast and autonomous analysis of large volumes of malware samples.

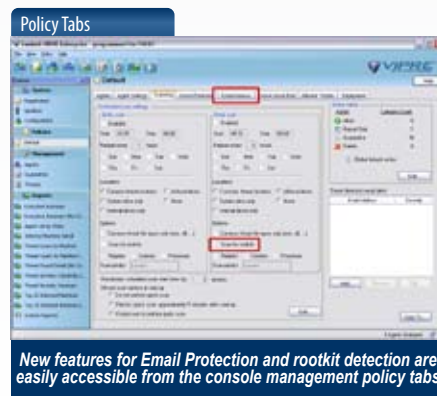
### Powerful, comprehensive scanning agent technology

The VIPRE agent is based on the same technology as VIPRE Antivirus + Antispyware for consumers. The agent scanning engine automatically scans your users' systems for

malware threats and leverages West Coast Labs' Checkmark Anti-Virus Desktop certified technology found in the consumer version of VIPRE. Administrators can configure the agent user interface to allow users to start and stop scans and manage their own quarantine.

### Multiple methods of deployment

VIPRE Enterprise supports multiple methods of agent deployment to allow you flexibility in how agents are pushed to your users' systems. Within the Admin Console, an agent deployment wizard helps you select a deployment option and assists you with your deployment configuration. Agents can be deployed using silent push install (using either WMI or RPC and admin shares), as an MSI file or a self-extracting executable. Additionally, you can create policies based on organizational units (OU) and VIPRE Enterprise will automatically deploy agents to any users or machines added to that OU. Auto-deployment can also be done using IP ranges and machine lists.



### Policy-based management

VIPRE Enterprise has sophisticated policy creation and management functionality that gives you the flexibility to control scheduling of quick scans and deep scans, set scan options (including scanning of known locations, whether to scan

cookies, and whether to scan running processes), and allow specific threats from the database. Additionally you can set up policies for remote workers, specify an alternate location to download updates from, as well as configure different settings for each user based on skill level (i.e. access to end user UI, abort scan etc.).

### Integration for NAC support

VIPRE customers have seamless integration with their NAC (Network Access Control) devices, SSL VPNs and more through OPSWAT's OESIS-enabled framework. This provides seamless, integrated control and visibility from the gateway to the desktop when using any OESIS-enabled device, including the market-leading NACs and SSL VPN gateways from vendors such as Cisco, F5, Juniper and more. These devices will automatically recognize your VIPRE endpoints and enforce your security policies down to the desktop.

### Reporting

VIPRE Enterprise's reporting features make it easy for administrators to schedule and customize its library of reports. A report scheduler allows you to easily schedule any report to run at a designated time with the ability to email reports to specified users; simplifying report distribution to management. Additionally, a custom report editor enables you to modify existing reports or create your own report to display an infinite combination of agent information available from within VIPRE Enterprise.



To see the full list of Windows Operating System requirements for Admin Console and Workstation Agent, please visit: [www.SunbeltSoftware.com/Business/VIPRE-Enterprise](http://www.SunbeltSoftware.com/Business/VIPRE-Enterprise)

vedatasheet April 2009